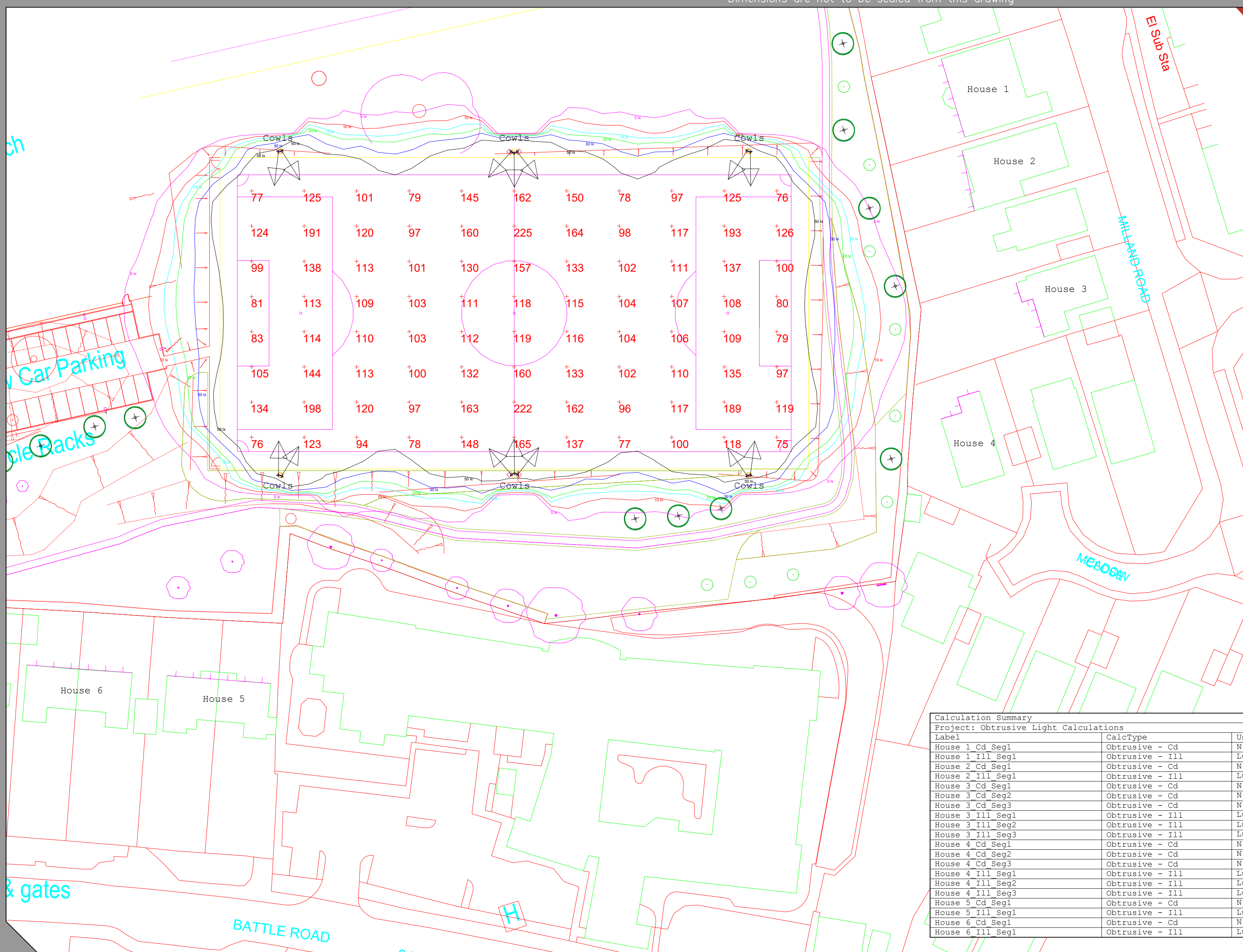


Dimensions are not to be scaled from this drawing



Kingfisher Lighting

Part of the Luceco PLC group of companies **LUCECO**



Obtrusive Light - Compliance Report
 CIE 150:2003, E2-Rural, Pre-Curfew
 Filename: Football 120lux
 21/06/2021 10:40:35

Illuminance
 Maximum Allowable Value: 5 Lux

Calculations Tested (10):

Calculation Label	Test Results	Max. Illum.
House 1_Ill_Seg1	PASS	1
House 2_Ill_Seg1	PASS	1
House 3_Ill_Seg1	PASS	1
House 3_Ill_Seg2	PASS	0
House 3_Ill_Seg3	PASS	1
House 4_Ill_Seg1	PASS	1
House 4_Ill_Seg2	PASS	1
House 4_Ill_Seg3	PASS	1
House 5_Ill_Seg1	PASS	1
House 6_Ill_Seg1	PASS	0

Luminous Intensity (Cd) At Vertical Planes
 Maximum Allowable Value: 7500 Cd

Calculations Tested (10):

Calculation Label	Test Results
House 1_Cd_Seg1	PASS
House 2_Cd_Seg1	PASS
House 3_Cd_Seg1	PASS
House 3_Cd_Seg2	PASS
House 3_Cd_Seg3	PASS
House 4_Cd_Seg1	PASS
House 4_Cd_Seg2	PASS
House 4_Cd_Seg3	PASS
House 5_Cd_Seg1	PASS
House 6_Cd_Seg1	PASS

Calculation Summary
 Project: Obtrusive Light Calculations

Label	CalcType	Units	Avg	Max	Min	Min/Avg	Min/Max
House 1 Cd Seg1	Obtrusive - Cd	N.A.	2746	2888	2511	0.91	0.87
House 1 Ill Seg1	Obtrusive - Ill	Lux	0.80	1	0	0.00	0.00
House 2 Cd Seg1	Obtrusive - Cd	N.A.	3350	3448	3209	0.96	0.93
House 2 Ill Seg1	Obtrusive - Ill	Lux	1.00	1	1	1.00	1.00
House 3 Cd Seg1	Obtrusive - Cd	N.A.	1218	1218	1218	1.00	1.00
House 3 Cd Seg2	Obtrusive - Cd	N.A.	1103	1103	1103	1.00	1.00
House 3 Cd Seg3	Obtrusive - Cd	N.A.	1015	1040	990	0.98	0.95
House 3 Ill Seg1	Obtrusive - Ill	Lux	1.00	1	1	1.00	1.00
House 3 Ill Seg2	Obtrusive - Ill	Lux	0.00	0	0	N.A.	N.A.
House 3 Ill Seg3	Obtrusive - Ill	Lux	0.50	1	0	0.00	0.00
House 4 Cd Seg1	Obtrusive - Cd	N.A.	3689	3689	3689	1.00	1.00
House 4 Cd Seg2	Obtrusive - Cd	N.A.	3227	3227	3227	1.00	1.00
House 4 Cd Seg3	Obtrusive - Cd	N.A.	2772	2772	2772	1.00	1.00
House 4 Ill Seg1	Obtrusive - Ill	Lux	1.00	1	1	1.00	1.00
House 4 Ill Seg2	Obtrusive - Ill	Lux	1.00	1	1	1.00	1.00
House 4 Ill Seg3	Obtrusive - Ill	Lux	1.00	1	1	1.00	1.00
House 5 Cd Seg1	Obtrusive - Cd	N.A.	1497	1536	1459	0.97	0.95
House 5 Ill Seg1	Obtrusive - Ill	Lux	0.50	1	0	0.00	0.00
House 6 Cd Seg1	Obtrusive - Cd	N.A.	1521	1535	1502	0.99	0.98
House 6 Ill Seg1	Obtrusive - Ill	Lux	0.00	0	0	N.A.	N.A.

Calculation Summary
 Project: Lux Levels

Label	CalcType	Units	Avg	Max	Min	Min/Avg	Min/Max
ISO	Illuminance	Lux	13.46	315	0	0.00	0.00
Pitch	Illuminance	Lux	120.39	225	75	0.62	0.33

Luminaire Schedule

Symbol	Qty	Label	Arrangement	Description
→	14	C	SINGLE	1 x 450w LED 4000k Amnis Match Flood with NST Optic @ 12m

Project Title: Hailsham Community College

Scale: 1:500 at A2 | Project Number: 42179

Date: 21/06/2021 | Drawing No.: Rev 1

Lighting Designer: MB

HEA HEMSA LP

For our LED lighting designs a 0.9mf has been used. If this differs from the maintenance period for this project then you must advise us accordingly.

A lighting applications design service is provided by us in good faith and without charge, relating to Kingfisher products only. As such, whilst every endeavor is made for accuracy from information provided by yourselves, the final responsibility for the suitability of the design lies with the client. The company cannot, therefore, accept any liability or consequential loss incurred.

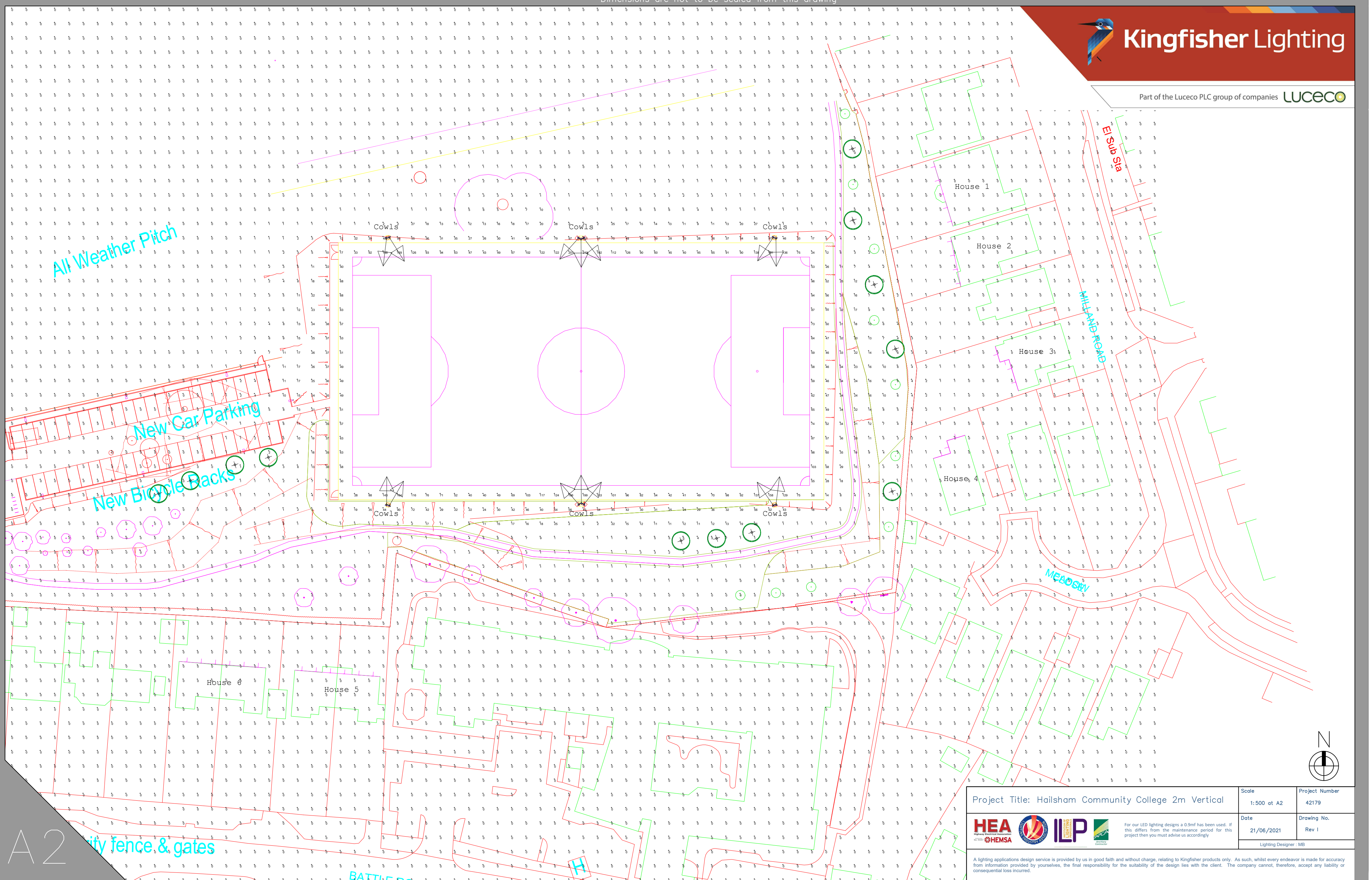
A2

Dimensions are not to be scaled from this drawing



Kingfisher Lighting

Part of the Luceco PLC group of companies **LUCECO**



Project Title: Hailsham Community College 2m Vertical	Scale: 1:500 at A2	Project Number: 42179
HEA HEMSA	IP Lighting	Date: 21/06/2021
Drawing No.: Rev 1		Lighting Designer: MB

For our LED lighting designs a 0.9mf has been used. If this differs from the maintenance period for this project then you must advise us accordingly.
A lighting applications design service is provided by us in good faith and without charge, relating to Kingfisher products only. As such, whilst every endeavor is made for accuracy from information provided by yourselves, the final responsibility for the suitability of the design lies with the client. The company cannot, therefore, accept any liability or consequential loss incurred.

A2
Security fence & gates